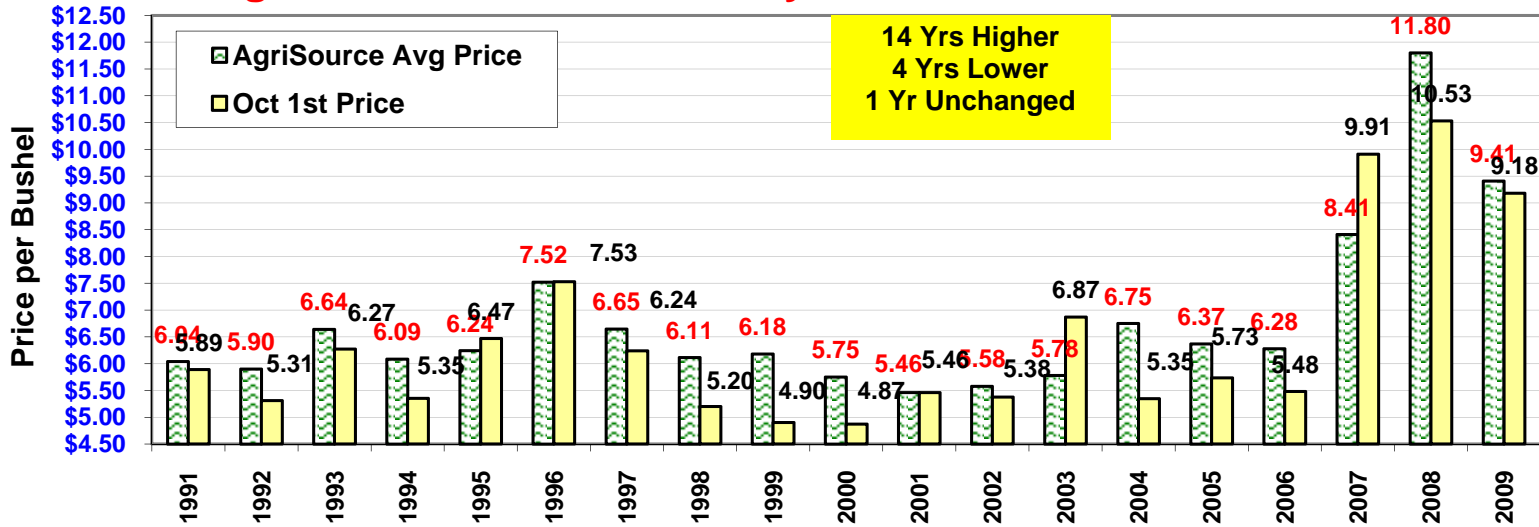
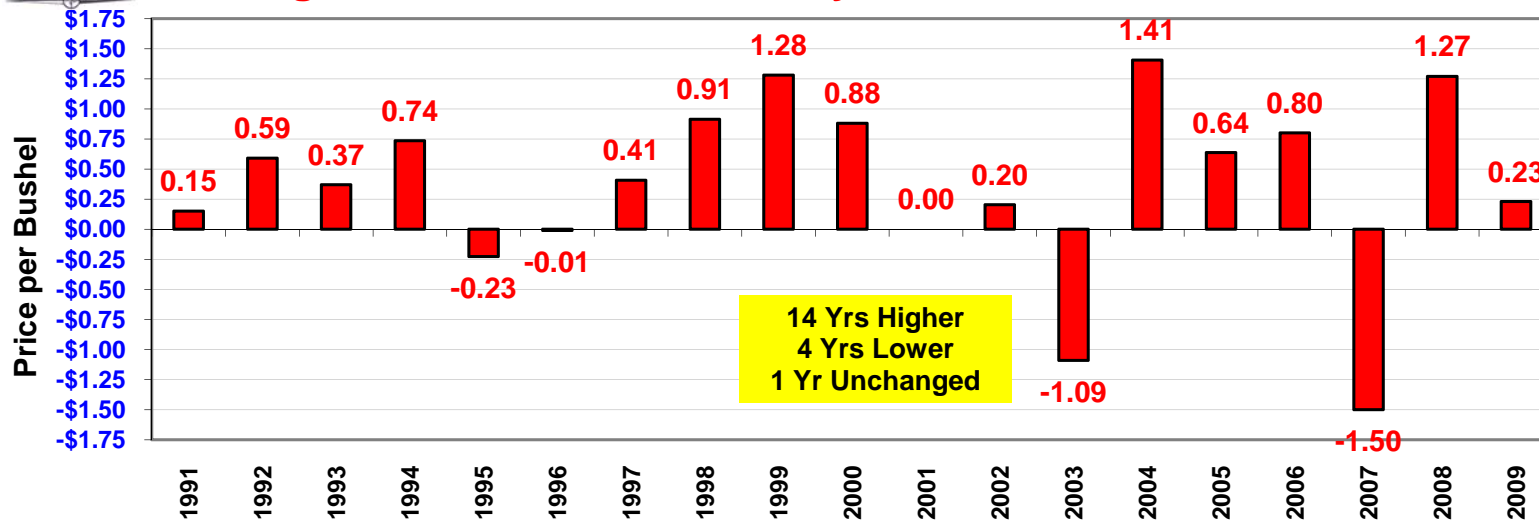




AgriSource Forward Nov Soybean Sales vs Oct 1st Price



AgriSource Forward Nov Soybean Sales vs Oct 1st Price



The risk of loss in trading commodities can be substantial, and past performance is not necessarily indicative of future results. Therefore, you should carefully consider whether such trading is suitable for you or your organization in light of your financial condition. Any examples given are strictly hypothetical and no representation is being made that any person will or is likely to achieve profits or losses similar to those examples. Neither the information, nor any opinion expressed shall be construed as an offer to buy or sell any futures or options on futures contracts.